

SİLİNDİR TİPİ

BORU ÇAPI

STROK

BAĞLANTI  
ELEMENLARI

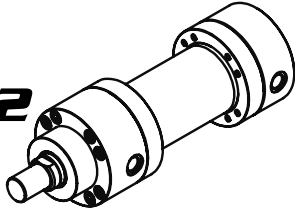
**W** ? /

? ? ? /

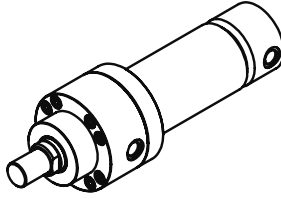
? ? ? ? /

? ? ?

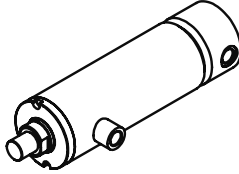
**W1-W2**



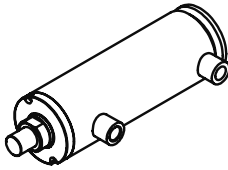
**W3**



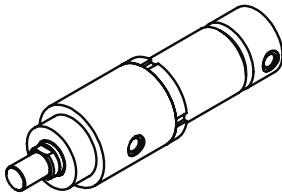
**W4**



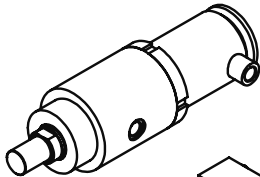
**W5**



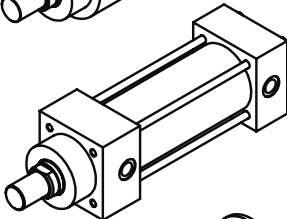
**W6**



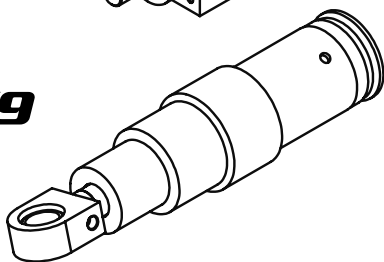
**W7**



**W8**



**W9**

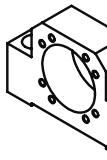
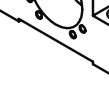
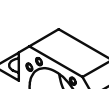
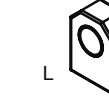
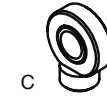
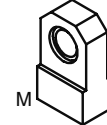
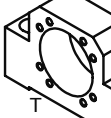
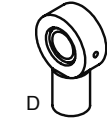
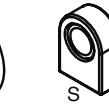
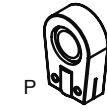
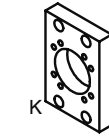
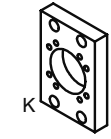
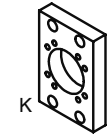
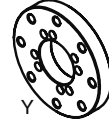
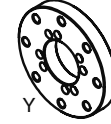


- Y : YUVARLAK FLANŞ
- K : KARE FLANŞ
- P : KISA TİP OYNAR MAFSAL
- R : TERAZİ MAFSAL
- S : LAMA TİP OYNAR MAFSAL
- D : OYNAR MAFSAL
- T : YER BAĞLANTI
- C : KISA KAYNAKLI OYNAR MAFSAL
- F : BURC TİP OYNAR
- M : LAMA TİP VIDALI OYNAR MAFSAL
- L : LAMA TİP BURCLU
- N : YUVARLAK BURCLU
- H : ÇATAL BAĞLANTI

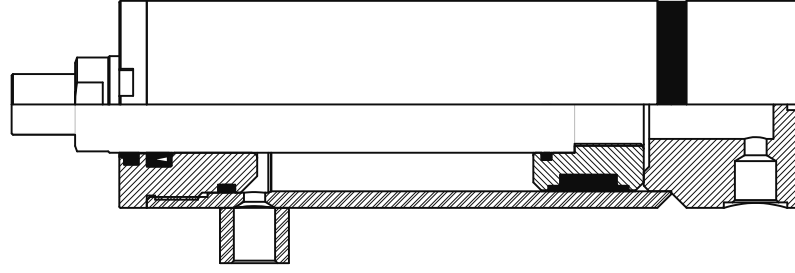
ön

orta

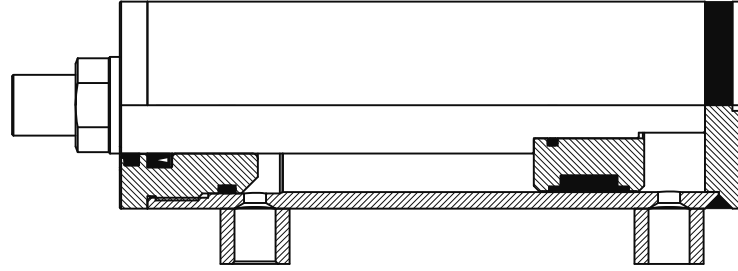
arka



**W4**



**W5**



#### **W4 Tipi Winman Hidrolik Silindir**

Winman W4 tipi silindirler deęişik endüstriyel ve mobil uygulamalar için dizayn edilmiştir.

W4 modeli silindirler arka kapakla kaynak, ön kafada ise boru içine dişli sistemler ile oluşturulurlar. Özellikle tarım sektöründe kullanılmak üzere arka yağ girişi manşon ile verilen daha kompakt ölçülere sahip W5 modeli alternatif olarak sunulmuştur.

Katalogda yer alan ölçü ve bilgiler standart W4 serisi silindirleri temel almaktadır. Kullanıcı taleplerine göre özel silindir dizaynı ve üretimi yapılabilmektedir. Bu konuda detaylı bilgi için lütfen bizimle irtibata geçiniz.

#### **W4 Type Winman Hydraulic Cylinders**

Winman W4 range of cylinders are designed for medium and heavy duty industrial and mobile applications.

The W4 range of cylinders is of welded construction at the cap end, with a threaded rod bearing at the head housing the gland seals. Especially for use in the agricultural sector, supplied with muff, back of the oil input, W5 model with more compact dimensions is produced as an alternative.

This catalogue describes the basic range of W4 cylinder's information and dimensions. In practice, many of these cylinders are designed as 'specials' to the customer's unique specifications. For more information, please contact us.

#### **Standart Özellikler**

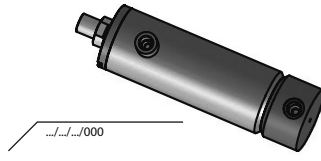
Çalışma basıncı	Maximum 240 bar
Test basıncı	300 bar
Minimum çalışma basıncı	10 bar
Çap ölçüleri	25 mm - 200 mm
Piston mili	14 mm - 125 mm
Maksimum strok uzunluğu	6000 mm
Çalışma sıcaklığı	-20°C' den +80°C
Maksimum çalışma hızı	0.5 m/s
Sızdırmazlık elemanı	NBR + PU
Kullanılacak yağ	Mineral oil
Optimum viskozite	20 mm <sup>2</sup> /s - 100 mm <sup>2</sup> /s

#### **Standard Specification**

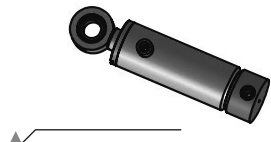
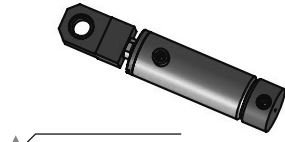
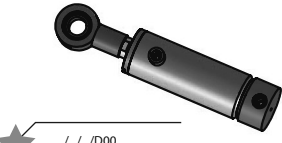
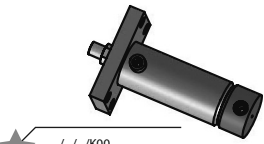
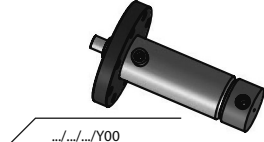
Working pressure	Maximum 240 bar
Test pressure	300 bar
Minimum working pressure	10 bar
Bore sizes	25 mm - 200 mm
Piston rod	14 mm - 125 mm
Maximum stroke length	6000 mm
Working temperature	-20°C' den +80°C
Maximum working speed	0.5 m/s
Seal	NBR + PU
Used oil	Mineral oil
Optimum viscosity	20 mm <sup>2</sup> /s - 100 mm <sup>2</sup> /s

# W4-W5 Tipi Type HİDROLİK SİLİNDİR BAĞLANTI ELEMANLARI

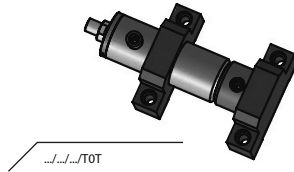
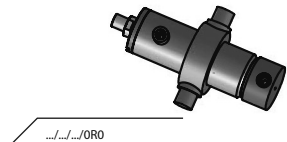
## MOUNTING STYLE OVERVIEW



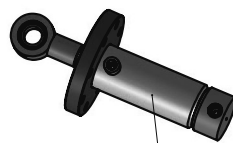
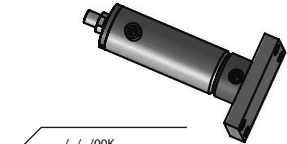
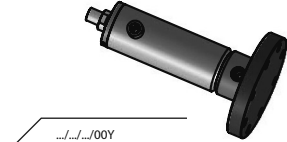
### ön



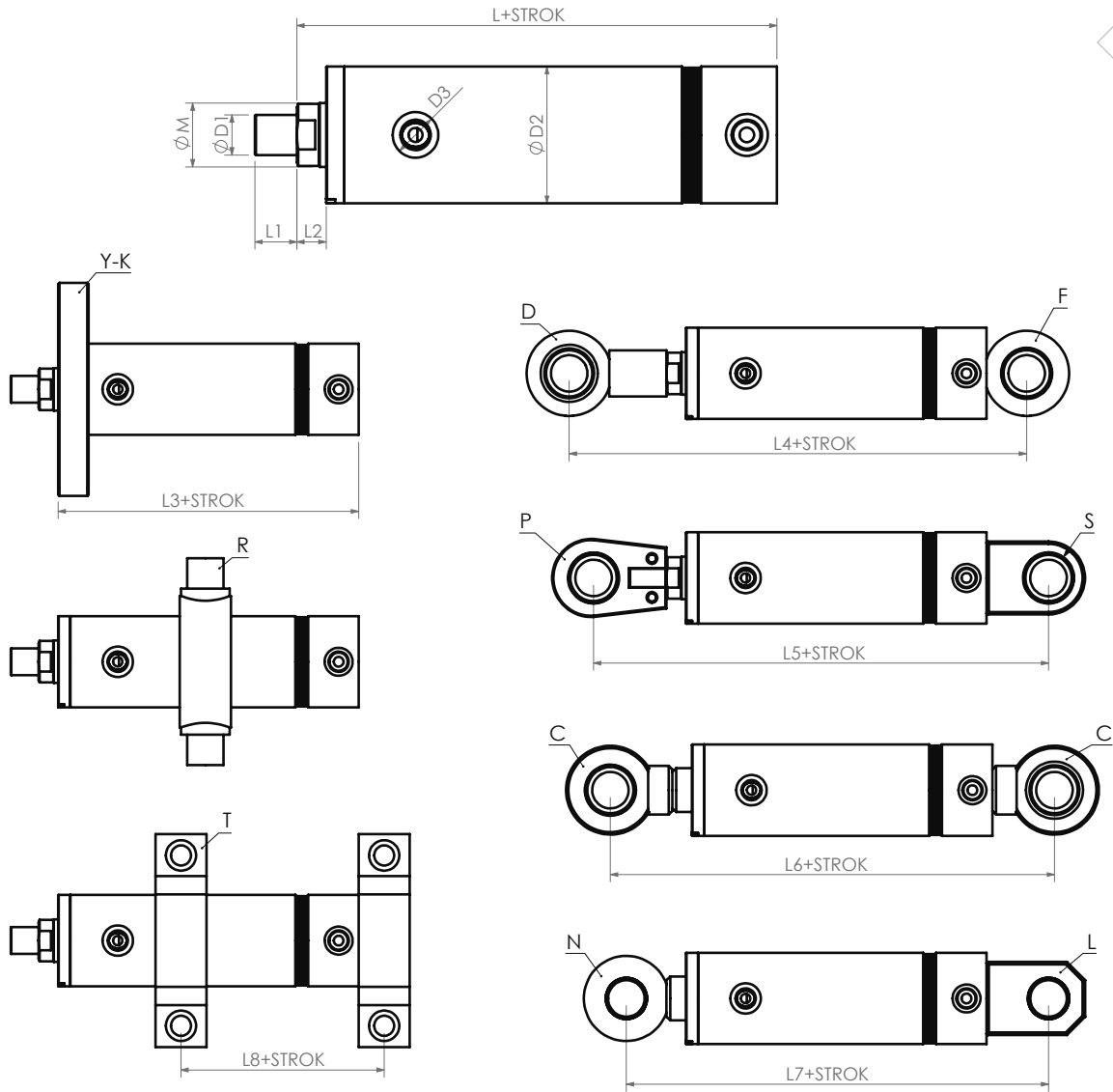
### orta



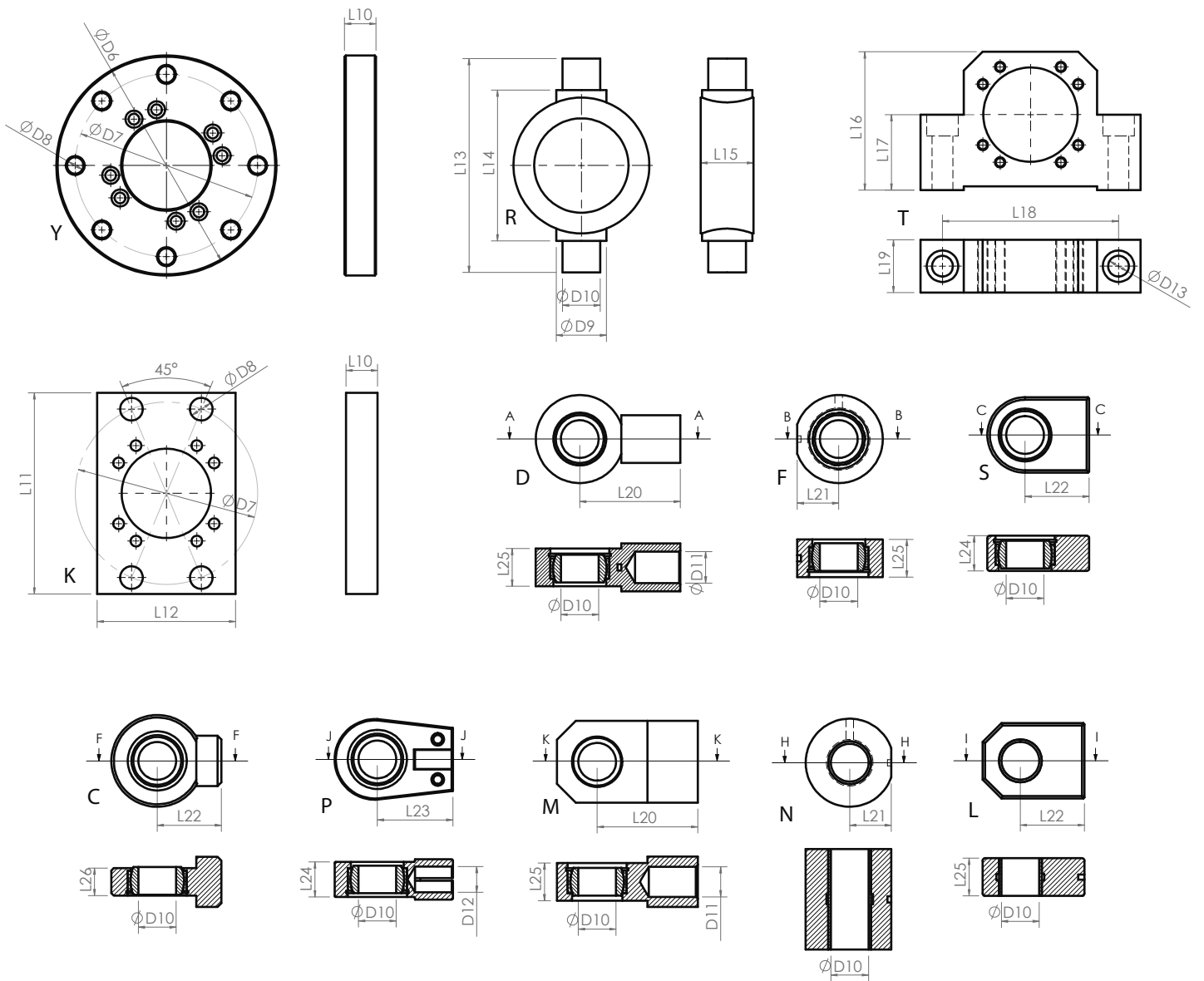
### arka



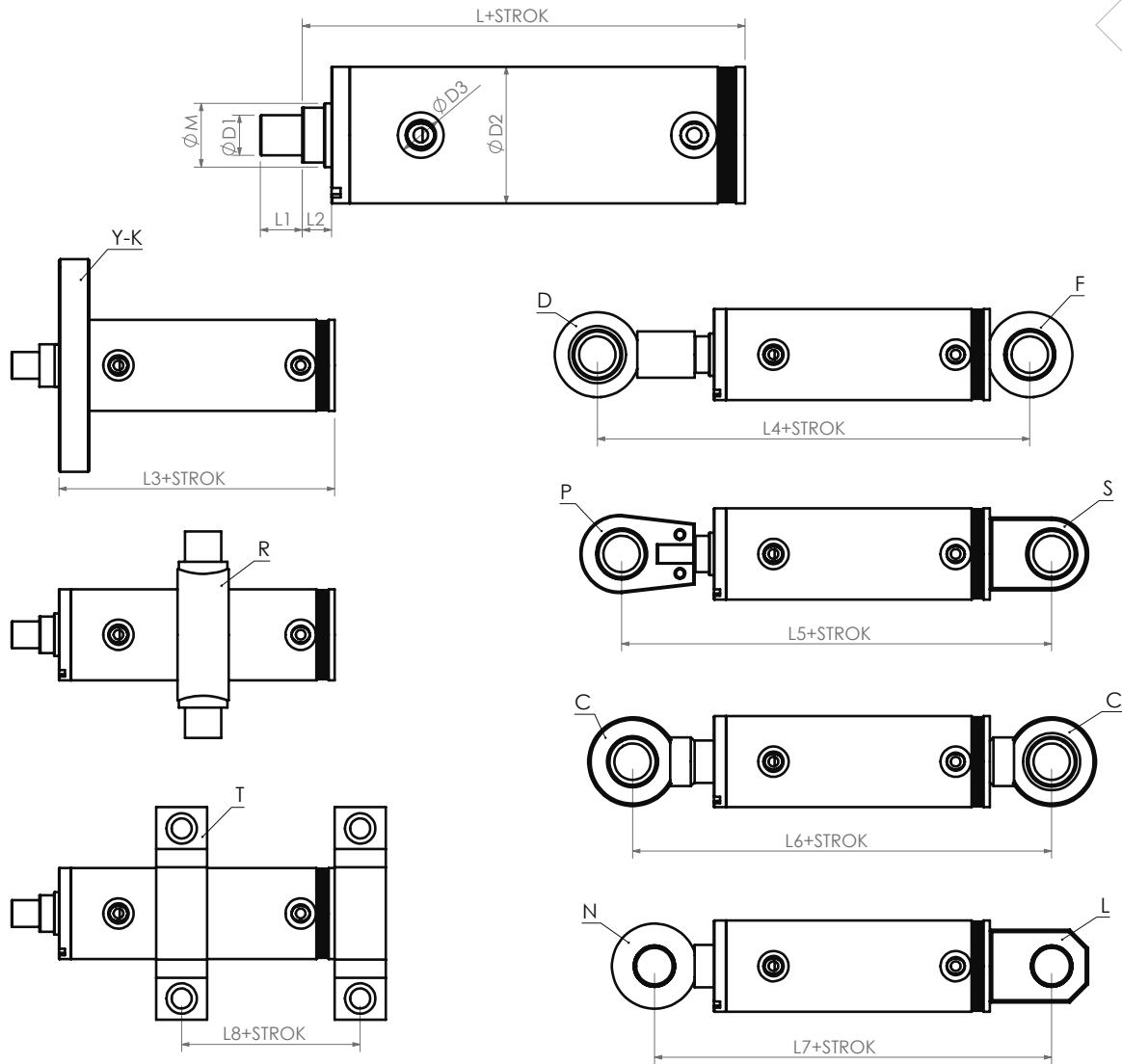
-İŞARETLİ ÜRÜNLERDE AYNI ANDA ÖN FLANŞ OLURSA FLANŞ KODU YANINA EKLENECEKTİR. ÖRNEKTE OLDUĞU GİBİ.  
ÖRNEK : W1/.../.../YP00



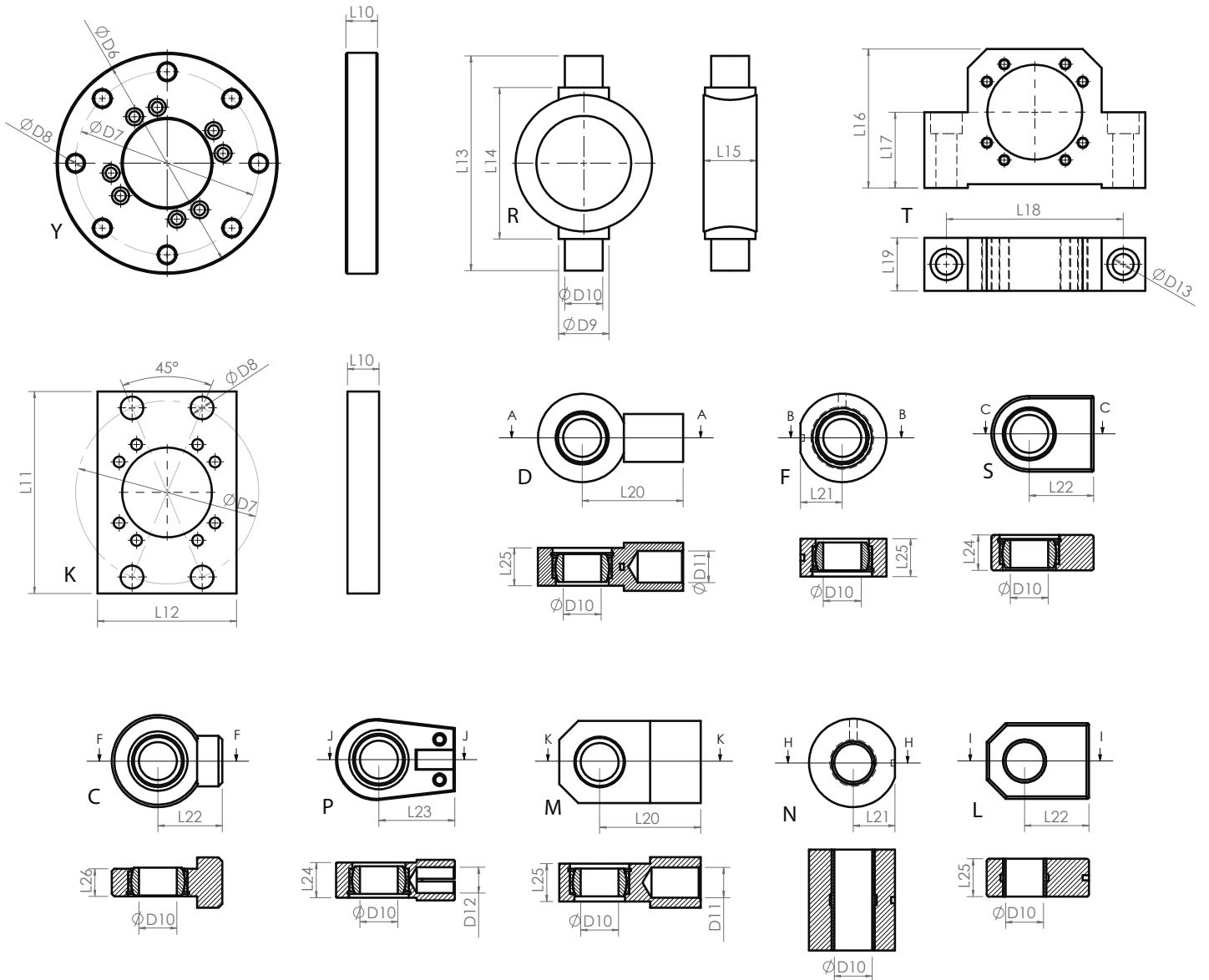
PİSTON	M	D1	D2	D3	D6	D7	D8	D9	D10	D11	D12	D13	L	L1	L2	L3	L4
32	14....	—	40	1/4"	110	92	9	20	—	—	—	10.5	134	—	13	120	—
	....18	—															
40	20....	M16*1,5	50	3/8"	125	106	9	25	20	M16x1,5	M16*1,5	10.5	137	17	13	124	212
	....25																
50	20....	M16*1,5	60	3/8"	148	126	11	30	25	M20x1,5	M16*1,5	12.5	145	17	14	131	238
	....35																
63	30....	M22*1,5	75	3/8"	170	145	13	40	30	M27x2	M22*1,5	16.5	163	23	16	147	276
	....45																
70	30....	M28*1,5	85	3/8"	170	145	13	40	35	M27x2	M22*1,5	16.5	173	23	16	157	286
	....55																
80	35....	M35*1,5	95	1/2"	195	165	17.5	50	40	M33x2	M35*1,5	20.5	186	36	18	168	326
	....60																
90	40....	M35*1,5	105	1/2"	195	165	17.5	50	40	M33x2	M35*1,5	20.5	186	36	18	168	326
	....60																
100	40....	M45*1,5	115	1/2"	238	200	22	60	50	M42x2	M45*1,5	24.5	227	46	20	207	400
	....75																
125	50....	M58*1,5	145	3/4"	272	235	22	70	60	M48x1,5	M58*1,5	24.5	241	59	23	218	444
	....90																



L5	L6	L7	L8	L10	L11	L12	L13	L14	L15	L16	L17	L18	L19	L20	L21	L22	L23	L24	L25	L26
-	-	-	-	16	105	70	-	-	-	-	-	-	-	-	-	-	-	-	-	-
225	213	198	54	16	115	80	122	90	30	75	40	100	30	52	23	38	50	19	20	16
240	235	218	58	20	140	90	145	105	36	90	50	125	36	65	28	45	50	23	25	20
274	265	247	67	25	160	110	170	120	42	110	60	140	42	80	33	51	60	28	30	22
294	304	267	67	25	160	110	170	120	42	110	60	140	42	80	33	61	70	30	30	25
340	324	298	78	32	182	125	199	135	52	130	69	175	52	97	43	69	85	35	35	28
340	324	298	78	32	182	125	199	135	52	130	69	175	52	97	43	69	85	35	35	28
420	403	368	95	32	220	150	220	160	62	155	80	220	62	120	53	88	105	40	40	35
471	441	404	106	32	252	180	295	195	76	200	105	245	76	140	63	100	130	50	50	44



PİSTON	M	D1	D2	D3	D6	D7	D8	D9	D10	D11	D12	D13	L	L1	L2	L3	L4
32	14....	—	40	1/4"	110	92	9	20	—	—	—	10.5	118	—	13	105	—
	....18	—															
40	20....	M16*1,5	50	3/8"	125	106	9	25	20	M16x1,5	M16*1,5	10.5	120	17	13	107	195
	....25																
50	20....	M16*1,5	60	3/8"	148	126	11	30	25	M20x1,5	M16*1,5	12.5	130	17	14	116	223
	....35																
63	30....	M22*1,5	75	3/8"	170	145	13	40	30	M27x2	M22*1,5	16.5	143	23	16	127	256
	....45																
70	30....	M28*1,5	85	3/8"	170	145	13	40	35	M27x2	M22*1,5	16.5	154	23	16	138	267
	....55																
80	35....	M35*1,5	95	1/2"	195	165	17.5	50	40	M33x2	M35*1,5	20.5	171	36	18	153	311
	....60																
90	40....	M35*1,5	105	1/2"	195	165	17.5	50	40	M33x2	M35*1,5	20.5	174	36	18	156	314
	....60																
100	40....	M45*1,5	115	1/2"	238	200	22	60	50	M42x2	M45*1,5	24.5	195	46	20	175	368
	....75																
125	50....	M58*1,5	145	3/4"	272	235	22	70	60	M48x1,5	M58*1,5	24.5	204	59	23	181	407
	....90																



L5	L6	L7	L8	L10	L11	L12	L13	L14	L15	L16	L17	L18	L19	L20	L21	L22	L23	L24	L25	L26
-	-	-	-	16	105	70	-	-	-	-	-	-	-	-	-	-	-	-	-	-
208	196	181	54	16	115	80	122	90	30	75	40	100	30	52	23	38	50	19	20	16
225	220	203	58	20	140	90	145	105	36	90	50	125	36	65	28	45	50	23	25	20
254	245	227	66	25	160	110	170	120	42	110	60	140	42	80	33	51	60	28	30	22
275	285	248	67	25	160	110	170	120	42	110	60	140	42	80	33	61	70	30	30	25
325	309	283	78	32	182	125	199	135	52	130	69	175	52	97	43	69	85	35	35	28
328	312	286	78	32	182	125	199	135	52	130	69	175	52	97	43	69	85	35	35	28
388	371	336	95	32	220	150	220	160	62	155	80	220	62	120	53	88	105	40	40	35
434	404	367	106	32	252	180	295	195	76	200	105	245	76	140	63	100	130	50	50	44