

MODÜLER ÇEKİLİ HIZ AYAR VALFLERİ MODULAR THROTTLE AND CHECK VALVES MTC - 03

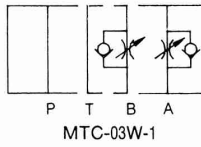
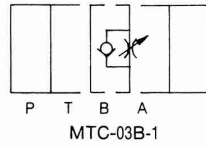
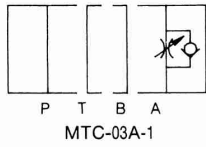
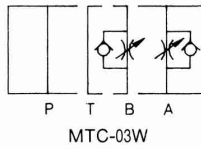
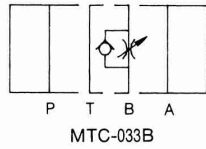
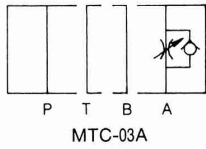


TEKNİK ÖZELLİKLER / TECHNICAL DATA

MAKSİMUM ÇALIŞMA BASINCI
MAX. OPERATING PRESSURE:
250 KGF/CM² (3600 PSI)

MAKSİMUM DEBİ / MAX. FLOW:
70 LPM (18.5 GPM)

SEMBOLLER / SYMBOLS



DÜŞÜNCELER / REMARKS

- * ÇEKVALF AÇMA BASINCI 0,8 BARDIR.
- * DEBİYİ AYARLARKEN, DEBİYİ AZALTMAK İÇİN SAAT YÖNÜNDE, ARTTIRMAK İÇİN TERS YÖNDE ÇEVİRİNİZ.
- * AKIŞKAN TAMAMEN KESİLEMEZ, KÜÇÜK BİR MİKTAR GEÇEBİLİR.

- * CRACKING PRESSURE OF CHECK VALVE IS 0.8 BARS.
- * WHEN ADJUST THE FLOW, USE CLOCKWISE TURN TO DECREASE THE FLOW AND USE COUNTER CLOCKWISE TURN TO INCREASE THE FLOW.
- * FLOW CAN NOT BE ABSOLUTELY OBSTRUCTED, SOME SMALL VOLUME WILL PASS THROUGH.

SİPARİŞ KODU / ORDERING CODE

MTC -- 03 -- W -- K -- 1 -- 50

DİZAYN NUMARASI / DESIGN NUMBER

I: SAYAÇ VAR / METER IN
KOD YOKSA / NO CODE: SAYAÇ YOK

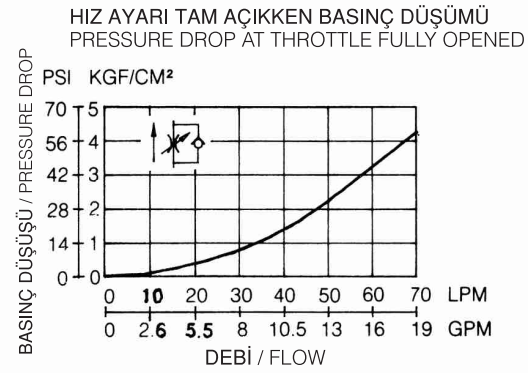
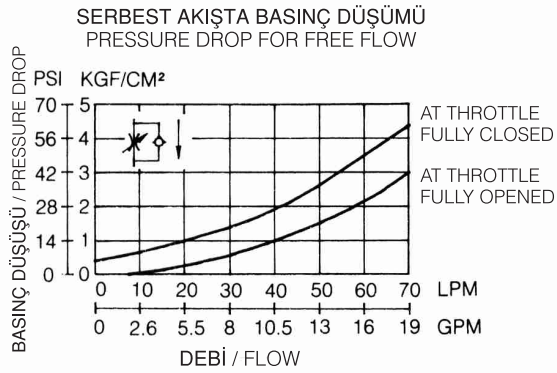
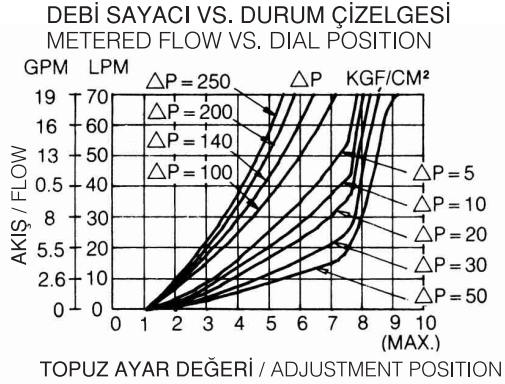
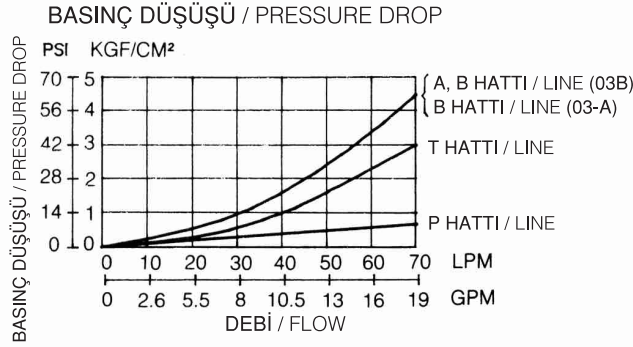
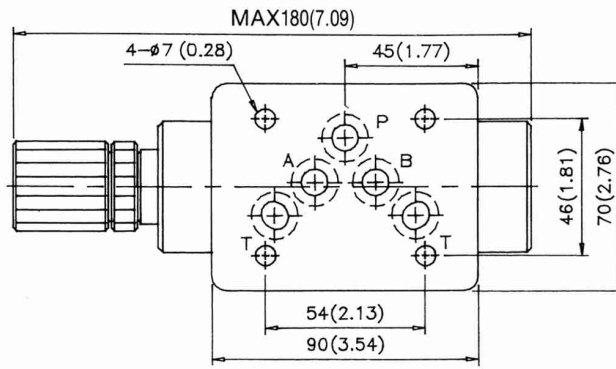
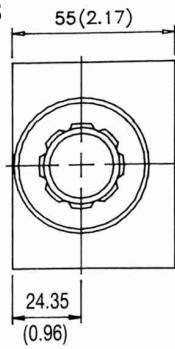
BASINÇ AYARLAYICI KOL TİPİ / ADJUSTING ARM TYPE:
K: EL TOPUZLU / WITH HAND KNOB
KOD YOKSA - ALLEN AYARLI / NO CODE - WITHOUT HAND KNOB:

İŞ YAPACAK DELİKLER / FUNCTION PORT:
A: A DELİĞİ / A PORT
B: B DELİĞİ / B PORT
W: A&B DELİKLERİ / A&B PORTS

DELİK ÖLÇÜSÜ / PORT SIZE
03: 3/8"

MTC - 03 SERİLERİ / MTC - 03 SERIES**PERFORMANS EĞRİLERİ / PERFORMANCE CURVES****MTC - 03 A/B/W**

YAĞIN ÇALIŞMA ÖLÇÜSÜ / MEASURED AT V= 35 CST AND T= 50 °C

**ÖLÇÜLER / DIMENSIONS****MTC -03 A/B**BİRİM / UNIT: MM (INCH)
AĞIRLIK / WEIGHT : 2.8 KGS

AĞIRLIK / WEIGHT : 2.9 KGS

MTC -03 W