

MODÜLER EMNİYET VALFLERİ / MODULAR RELIEF VALVES

MR - 02

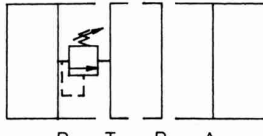


TEKNİK BİLGİ / TECHNICAL DATA

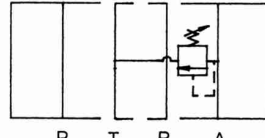
Maksimum Çalışma Basıncı / Max. Operating Pressure:
250 KGF / CM2 (3600 PSI)

Maksimum Debi / Max. Flow
40 LPM (10.57 GPM)

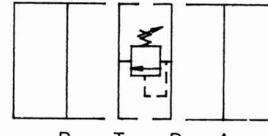
SEMBOLLER / SYMBOLS



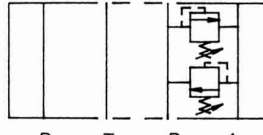
MR-02P



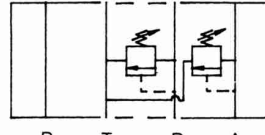
MR-02A



MR-02B



MR-02D



MR-02C

SİPARİŞ KODU / ORDERING CODE

MR -- 02 -- P -- K -- 1 -- 50

Design Numarası / Dizayn Number

Basınç Ayarlama Aralıkları / Pressure Adjusting Range

1: 8 -70 KGF/CM2 (120 - 1000 PSI)

2: 35 -160 KGF/CM2(500 - 2300 PSI)

3: 70 - 250 KGF/CM2 (1000 - 3600 PSI)

Basınç Ayar Kolu / Adjusting Arm Type

K: Topuzlu El kumanda ile / With Hand Knob

Kod Yoksa: Akyenle Kumandalı / No Code:Without Hand Knob

İş Yapacak Delikler / Function Port:

P: P Deliği / P Port

A: A Deliği / A Port

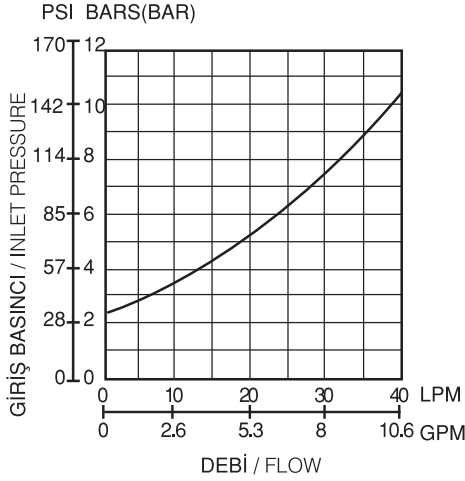
B: B Deliği / B Port

C: A&B Delikleri Tanka Dönüflü / A&B Ports Vented to Tank

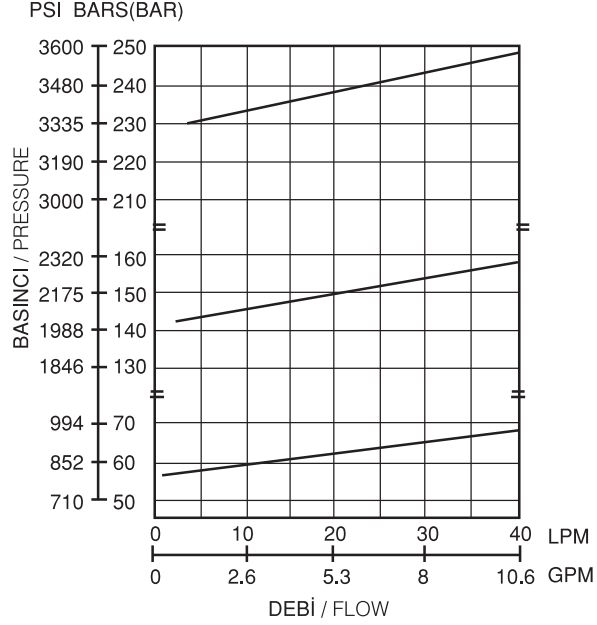
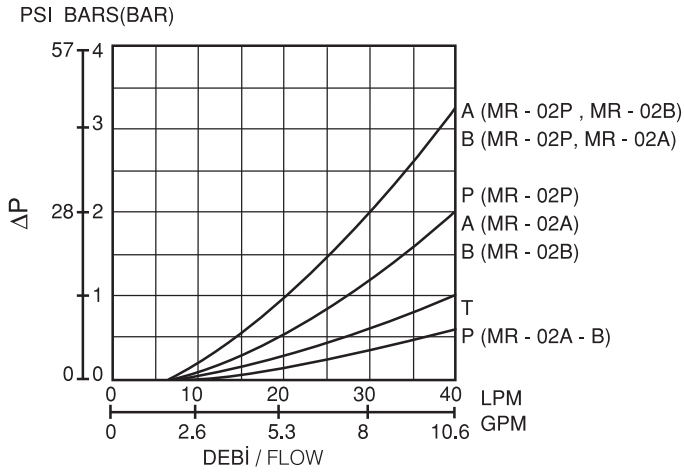
D: A&B Çapraz Ters Emniyetli / A&B Ports Cross Over Relief

Delik Ölçüsü / Port Size:

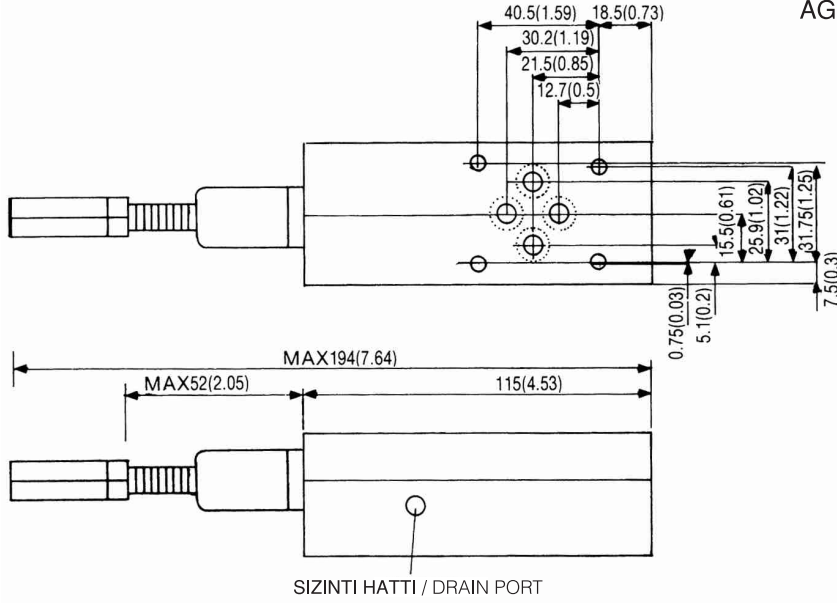
02: 1/4"

MR - 02 SERİLERİ / MR -02 SERIES**ÇALIŞMA EĞRİLERİ / PERFORMANCE CURVES****MİNİMUM AYARLAMA BASINCI
MIN. ADJUSTMENT PRESSURE**

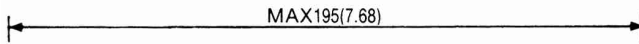
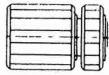
YAĞ ÇALIŞMA ÖLÇÜSÜ V= 35CST ve T= 50 °C
MEASURED AT V= 35 CST AND T= 50 °C

**BELLİ DEBİLERDE ÇALIŞMA BASINCI
OPERATING PRESSURE AT FLOW RATED****BASINÇ DÜŞÜMÜ EĞRİSİ
PRESSURE DROP CURVE****GÖRÜŞLER / REMARKS**

- * TANK HATTININ GERİ BASINCINI MİNİMİZE EDİN, TAVSİYE EDİLEN; 2 BAR'DAN AŞAĞI OLMASIDIR.
- * EMNİYET VALFİ OLARAK KULLANIMDA, MAX. ÇALIŞMA BASINCI, BEKLENEN ÇALIŞMA BASINCINDAN 10-15 BAR YUKARIYA AYARLANMALIDIR.
- * AKIŞI AYARLARKEN, DEBİYİ AZALTMAK İÇİN SAAT YÖNÜNDE, ARTTIRMAK İÇİN SAATİN TERSİ YÖNÜNDE ÇEVİRİN.
- * MINIMIZE THE BACK PRESSURE OF TANK PORT WHEN USE IT, AND RECOMMEND BACK PRESSURE BELOW 2 KGF / CM2
- * TO BE A SAFETY VALVE, MAX. OPERATING PRESSURE SHOULD BE SET BY 10 - 15 KGF / CM2 MORE THAN EXPECTED OPERATING PRESSURE.
- * WHEN ADJUST THE FLOW, USE CLOCKWISE TURN TO DECREASE THE FLOW AND USE COUNTER CLOCKWISE TURN TO INCREASE THE FLOW.

MR - 02 SERİLERİ / MR -02 SERIES**ÖLÇÜLER / DIMENSIONS****MR - 02 A/B/P**BİRİM / UNIT: MM (INCH)
AĞIRLIK / WEIGHT : 1.6 KGS

TOPUZLA / WITH KNOB



AĞIRLIK / WEIGHT : 1.1 KGS

MR - 02 C/D