

## MODÜLER İKİZ KİLİTLEME VALFLERİ MODULAR PILOT CHECK VALVES MPC - 02



### TEKNİK ÖZELLİKLER / TECHNICAL DATA

MAKSİMUM ÇALIŞMA BASINCI  
MAX. OPERATING PRESSURE:  
250 KGF/CM<sup>2</sup> (3600 PSI)

MAKSİMUM DEBİ / MAX. FLOW:  
40 LPM (10.6 GPM)

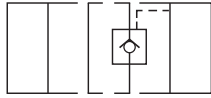
AÇMA BASINCI / CRACKING PRESSURE:  
5 KGS (70PSI)

AĞIRLIK / WEIGHT:  
1.3 KGS

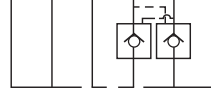
### SEMBOLLER / SYMBOLS



MPC-02A



MPC-02B



MPC-02W

### SİPARİŞ KODU / ORDERING CODE

MPC -- 02 -- A -- 50

DİZAYN NUMARASI / DESIGN NUMBER

İŞ YAPACAK DELİKLER / FUNCTION PORT

A: A DELİĞİ / A PORT

B: B DELİĞİ / B PORT

W: A ve B DELİKLERİ / A&B PORTS

DELİK ÖLÇÜSÜ / PORT SIZE

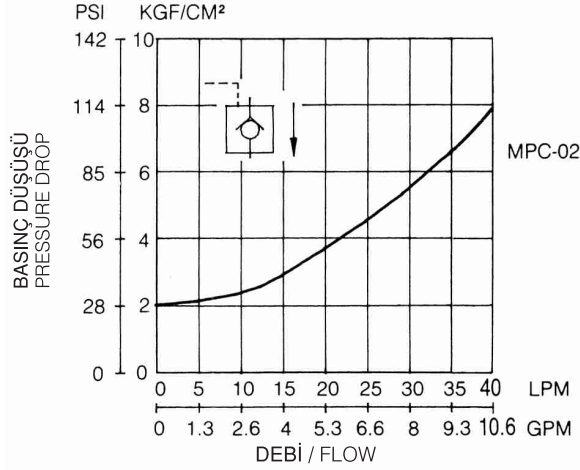
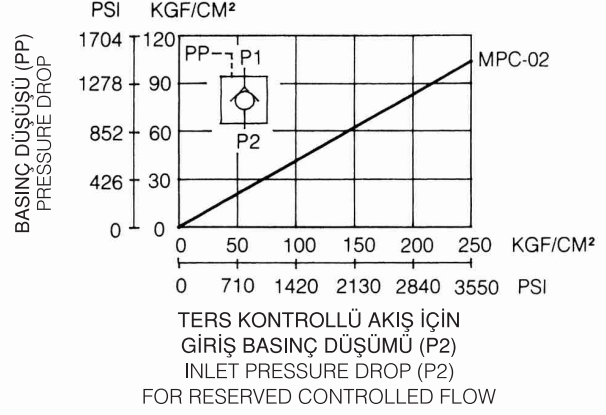
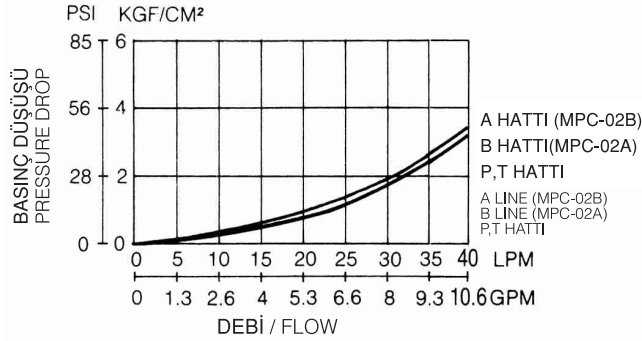
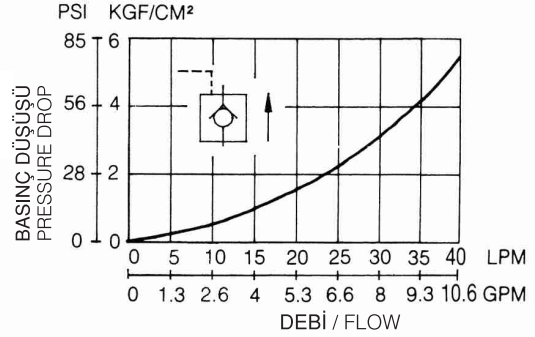
02: 1/4"

PILOT KUMANDALI ÇEK VALFLER

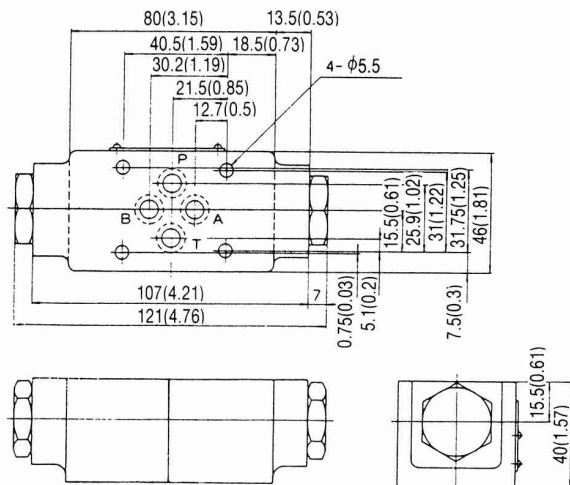
PILOT CHECK VALVES

## MPC - 02 SERİLERİ / MPC -02 SERIES

## ÇALIŞMA EĞRİLERİ / PERFORMANCE CURVES

YAĞ ÇALIŞMA ÖLÇÜSÜ V= 35 CST VE T= 50°C  
MIN. PILOT PRESSURE V= 35 CST VE T= 50°CSERBEST AKIŞ İÇİN BASINÇ DÜŞÜŞÜ  
PRESSURE DROP FOR FREE FLOWMİNİMUM PİLOT BASINCI  
MIN. PILOT PRESSURETERS KONTROLLÜ AKIŞ İÇİN  
GİRİŞ BASINÇ DÜŞÜMÜ (P2)  
INLET PRESSURE DROP (P2)  
FOR RESERVED CONTROLLED FLOWBASINÇ DÜŞÜŞÜ  
PRESSURE DROPTERS AKIŞ KONTROLÜNDE  
BASINÇ DÜŞÜMÜ  
PRESSURE DROP FOR RESERVE CONTROLLED FLOW.

## ÖLÇÜLER / DIMENSIONS



BİRİM / UNIT: MM(INCH)