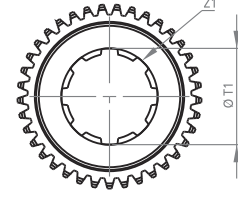
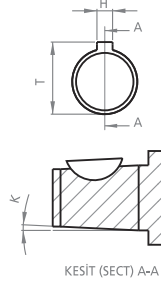
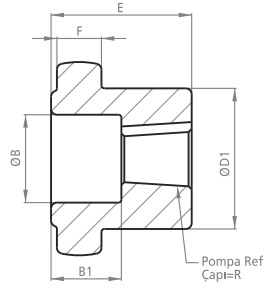
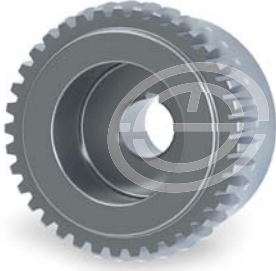


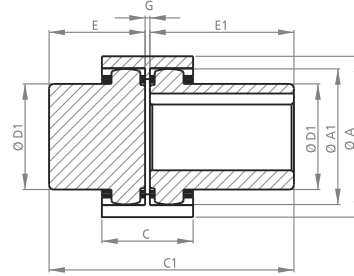
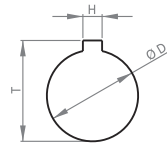
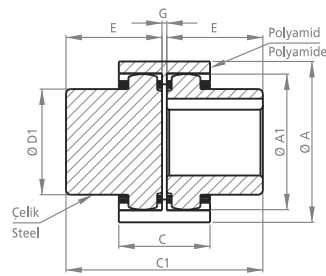
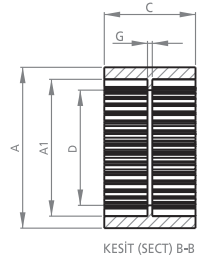
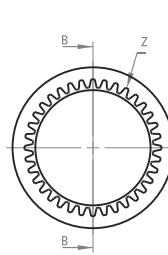
DK55**KAPLİN****WINMAN®**

POMPA MİLİNE GÖRE İŞLENMİŞ KAPLİNLER
PROCESSED COUPLINGS PUMP SHAFT

KOD CODE	B	B1	D1	E	F	H	K	R	T	T1	Z	Z1
DK55-1P03	40	33	85	55	17	4.00	1/8	16.66	18.66	-	48	-
DK55-1P03T	40	33	85	55	17	3.20	1/8	16.66	18.26	-	48	-
DK552PK03	40	28	85	55	17	4.00	1/8	21.59	23.60	-	48	-
DK552PD03	-	-	85	55	17	6.35	-	22.15	25.35	-	48	-
DK55-SAE-A-03	-	-	85	55	17	5.00	-	19.05	21.55	-	48	-
DK553PD	-	-	85	55	17	8.00	-	31.75	35.75	-	48	-
DK5513F-03	-	-	85	55	17	-	-	-	-	21.80	48	13
DK5513F-1-03	-	-	85	55	17	-	-	-	-	22.20	48	13
DK5515F-03	-	-	85	55	17	-	-	-	-	25.20	48	15
DK5514F-1-03	-	-	85	55	17	-	-	-	-	29.85	48	14
DK5514F-2-03	-	-	85	55	17	-	-	-	-	30.00	48	14
DK5514F-3-03	-	-	85	55	17	-	-	-	-	31.70	48	14
DK5514F-4-03	-	-	85	55	17	-	-	-	-	27.25	48	14
DK558F-03	-	-	85	55	17	-	-	-	-	36.10	48	8
DK5518F-03	-	-	85	55	17	-	-	-	-	39.70	48	18



KOD CODE	A	A1	C	D	G	Z
DK5502	121	101.7	58	70	12	48



MOTOR MİLİNE GÖRE İŞLENMİŞ KAPLİNLER
PROCESSED COUPLINGS MOTOR SHAFT

KOD CODE	A	A1	C	C1	D	D1	E	E1	G	H	T	Z
DK5503	121	99.3	58	113	12	85	55	-	3	-	-	48
DK552403	121	99.3	58	113	24	85	55	-	3	8	28	48
DK552803	121	99.3	58	113	28	85	55	-	3	8	32	48
DK553803	121	99.3	58	113	38	85	55	-	3	10	43	48
DK554203	121	99.3	58	113	42	85	55	-	3	12	47	48
DK554803	121	99.3	58	113	48	85	55	-	3	14	53	48
DK555503	121	99.3	58	113	55	85	55	-	3	16	60	48
UDK5503	121	99.3	58	133	12	85	55	75	3	-	-	48
UDK553803	121	99.3	58	133	38	85	55	75	3	10	43	48
UDK554203	121	99.3	58	133	42	85	55	75	3	12	47	48
UDK554803	121	99.3	58	133	48	85	55	75	3	14	53	48
UDK555503	121	99.3	58	133	55	85	55	75	3	16	60	48

TOLERANSLAR MİL ÖLÇÜLERİNDE: -0 +0.05, DİĞER ÖLÇÜLERDE: ±0.15
 TOLERANCES SHAFT DIMENSIONS: -0 +0.05, OTHER DIMENSIONS: ±0.15

Tasarım Tescil No Design Registration Certificate Number: 2001 01950

Motor Mil Çapları için
 sayfa 26'ya bakınız.
 Look at the paper 26 for
 Motor Shaft Diameters.