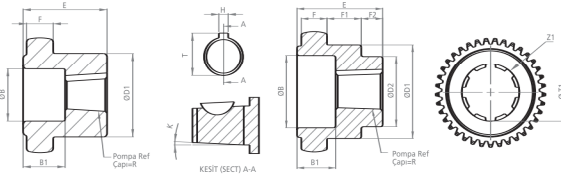
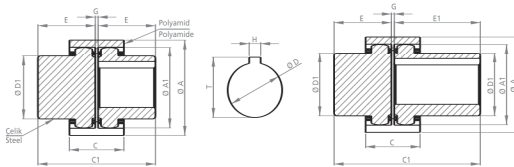
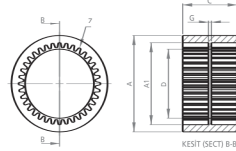


**DK32****KAPLİN****WINMAN®**
**POMPA MİLİNE GÖRE İŞLENMİŞ KAPLİNLER**  
**PROCESSED COUPLINGS PUMP SHAFT**

KOD CODE	B	B1	D1	D2	E	F	F1	F2	H	K	R	T	T1	Z	Z1
DK3211703	34	18	50	33	40	12.40	15.5	10	3.20	1/8	15.00	16.60	-	38	-
DK321PK03	34	18	50	33	40	12.40	15.5	10	4.00	1/8	16.66	18.66	-	38	-
DK321PK03 T	34	18	50	33	40	12.40	15.5	10	3.20	1/8	16.66	18.26	-	38	-
DK322PK03	34	13	50	33	40	12.40	-	-	4.00	1/8	21.59	23.60	-	38	-
DK322PD03	-	-	50	-	40	12.40	-	-	6.35	-	22.15	25.35	-	38	-
DK32-SAE-A-03	-	-	50	-	40	12.40	-	-	5.00	-	19.05	21.55	-	38	-
DK3213F-03	-	-	50	-	40	12.40	-	-	-	-	-	-	21.80	38	13
DK3213F-1-03	-	-	50	-	40	12.40	-	-	-	-	-	-	22.20	38	13
DK3215F-03	-	-	50	-	40	12.40	-	-	-	-	-	-	25.20	38	15
DK3214F-1-03	-	-	50	-	40	12.40	-	-	-	-	-	-	29.85	38	14
DK3214F-2-03	-	-	50	-	40	12.40	-	-	-	-	-	-	30.00	38	14
DK3214F-3-03	-	-	50	-	40	12.40	-	-	-	-	-	-	31.70	38	14
DK3214F-4-03	-	-	50	-	40	12.40	-	-	-	-	-	-	27.25	38	14



KOD CODE	A	A1	C	D	G	Z
DK3202	76	60	43	54	6	38


**MOTOR MİLİNE GÖRE İŞLENMİŞ KAPLİNLER**  
**PROCESSED COUPLINGS MOTOR SHAFT**

KOD CODE	A	A1	C	C1	D	D1	E	E1	G	H	T	Z
DK3203	76	59.3	43	83	-	50	40	-	3	-	-	38
DK321903	76	59.3	43	83	19	50	40	-	3	6	22	38
DK322403	76	59.3	43	83	24	50	40	-	3	8	28	38
DK322803	76	59.3	43	83	28	50	40	-	3	8	32	38
DK323203	76	59.3	43	83	32	50	40	-	3	8	36	38
UDK3203	76	59.3	43	103	-	50	40	60	3	-	-	38
UDK321903	76	59.3	43	103	19	50	40	60	3	6	22	38
UDK322403	76	59.3	43	103	24	50	40	60	3	8	28	38
UDK322803	76	59.3	43	103	28	50	40	60	3	8	32	38
UDK323203	76	59.3	43	103	32	50	40	60	3	8	36	38

TOLERANSLAR MİL ÖLÇÜLERİNDE: -0 -+0.05, DİĞER ÖLÇÜLERDE: ±0.15  
 TOLERANCES SHAFT DIMENSIONS: -0 -+0.05, OTHER DIMENSIONS: ±0.15

Tasarım Tescil No Design Registration Certificate Number: 2001 01950

Motor Mil Çapları için  
 sayfa 26'ya bakınız.  
 Look at the paper 26 for  
 Motor Shaft Diameters.